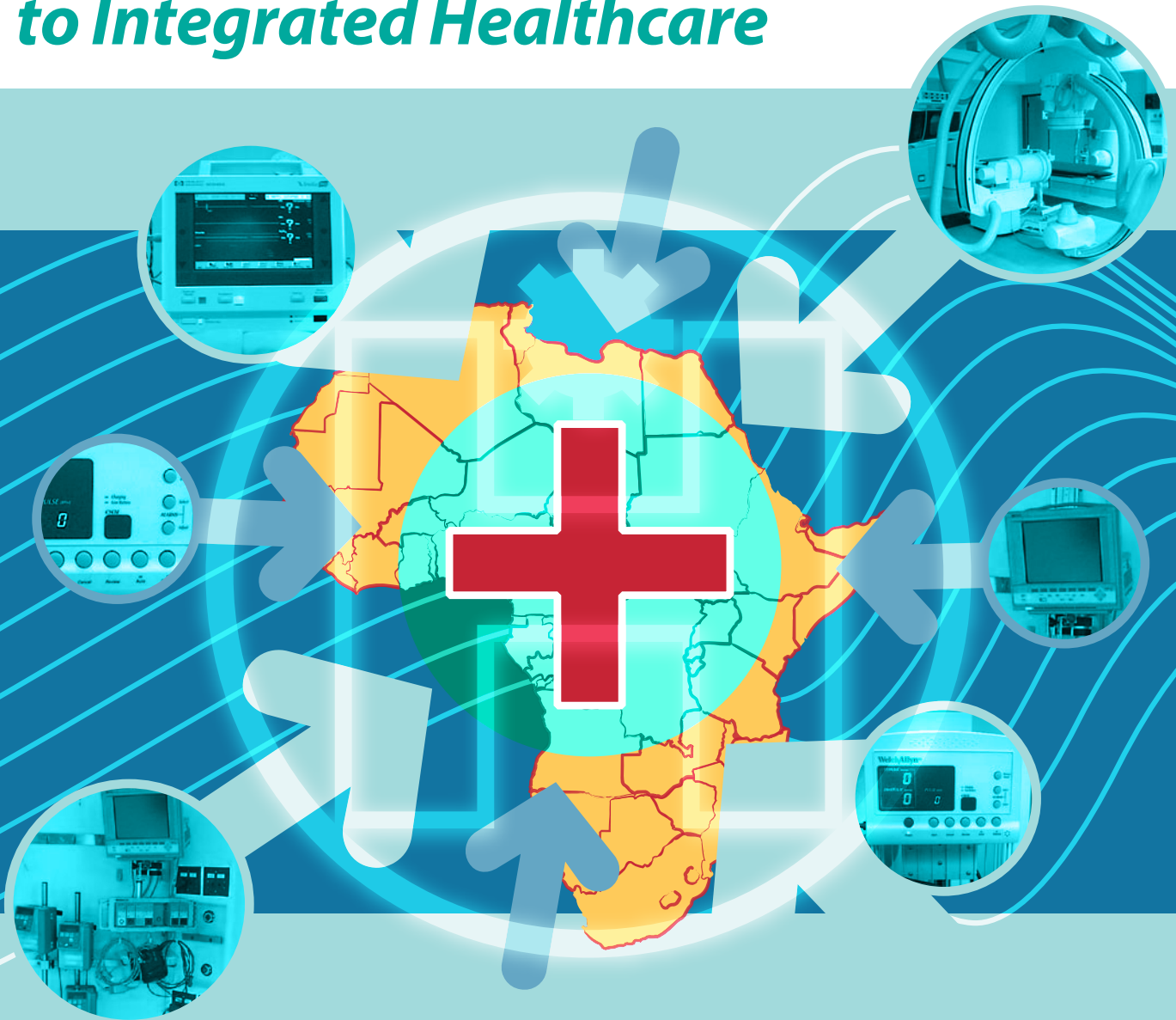


SAFHE & CEASA 2007

NATIONAL BIENNIAL CONFERENCE & EXHIBITION

African Solutions to Integrated Healthcare



17 — 19 October 2007
Feather Market Centre
Port Elizabeth

CPD 2.5pts

Organised by

South African Federation of Hospital Engineering
Clinical Engineering Association of South Africa

In Association with the

Public Health Group of the International Union of Architects

Presented by

Strategic Business Services (Pty) Ltd



www.sbs.co.za/safhe

WELCOME

May we take this opportunity to invite you to join us for this year's innovative and stimulating SAFHE/CEASA conference and exhibition taking place for the first time in Port Elizabeth.

The SAFHE/CEASA event is rightly regarded as the most important event of the year in Southern Africa for healthcare development. Focusing on facilities design, construction, maintenance and operations, the event draws key people from both the public and private sector who share a common desire to improve healthcare services.

This year's programme includes three tracks plus more interactive debate sessions providing opportunities for delegates to air their concerns and debate the issues whether strategic, technical or operational.

We look forward to welcoming you to the beautiful city of Port Elizabeth with a promise that you will be better informed, stimulated and will not leave disappointed.

Robin O'Reilly
SAFHE Co-Chair

Paolo Boschetti
CEASA Co-Chair

Geoff Abbott
Programme Chair

WHO SHOULD ATTEND?

**Health Service and Facilities:
Planners, Administrators and Managers**

Medical Equipment Specialists and Suppliers

Architects and Quantity Surveyors

Hospital Engineers and Maintenance Personnel

Clinical Engineering Practitioners



THE VENUE

Feather Market Centre, Port Elizabeth

The Feather Market Convention Centre is a multi-functional venue, providing stylish and elegant facilities for conference and exhibitions. It is located within a 10 kilometre radius of all major hotels as well as the airport.

The centre is situated in the CBD in Baakens Road. Contact telephone number is (041) 585-5514.

DAY 1

WEDNESDAY 17 OCTOBER 2007

08:30	Registration / Refreshments		
10:30	Conference Opening: SAFHE / CEASA		
10:40	Conference Opening: National Department of Health		
11:10	Keynote Address: National Department of Health		
11:50	Plenary Address: Hospital Planning in Developing Countries: Planning and Building Hospitals in Africa and Asia - A Comparison and Lessons Learned <i>Henning Lensch, CEO, RRP Architects+Engineers, Germany</i>		
12:30	Lunch & Opening of Exhibition		
	Track 1 Planning & Design	Track 2 Operation	Track 3 Clinical Engineering
14:00	Rationalisation and Upgrading of Hospitals in the Port Elizabeth area <i>Thozamile Sydney Mafu, Deputy Director: Health Physical Facilities Planning, Eastern Cape Department of Health & Bruce Brinkman, CEO Brinkman Ndayi McAll</i>	2010 FIFA World Cup - A Health Services Strategy <i>Peter Fuhri, Director: 2010 World Cup Unit, National Department of Health</i>	The Role of the Clinical Engineer in Planning of Facilities <i>Magda Coetzer, Deputy Director: Health Technology, National Department of Health</i>
14:40	The Management of Large Consultant Teams in the Design and Planning Process of Hospitals with emphasis on timeous integration of Client and Specialist Design Information <i>Deon van Onselen, Director and Frik Lange, Associate Partner, Osmond Lange Architects & Planners</i>	"Islands of Excellence" <i>Andrew Cunninghame, Chief Director: Professional Support Services, Western Cape Department of Health</i>	Digital X Ray and PACS in a Hospital Environment <i>Hendrik Radyn, Health Technology Manager, Western Cape Department of Health</i>
15:20	Refreshments / View Exhibition		
15:50	Panel Discussion 1: Continuing Professional Development - A SAFHE Initiative		
16:50	End of formal proceedings for Wednesday		
17:10	Cocktail Party (Exhibition Area — to 19:30)		

Delegates attending the SAFHE & CEASA 2007 Full Conference will earn 2.5 CPD points.

ABOUT SAFHE

www.safhe.co.za

The South African Federation of Hospital Engineering (SAFHE) is an autonomous, non-profit organization of persons involved in the design, construction, commissioning, management and maintenance of healthcare facilities and equipment. SAFHE is recognised by ECSA as a voluntary organisation and may allocate CPD points.



ABOUT CEASA

www.ceasa-national.org.za

The Clinical Engineering Association of South Africa consists of clinical engineers, technicians, technologists and other practitioners involved in healthcare technology. CEASA's aim is the promotion and development of all aspects of clinical engineering and healthcare technology, including design, construction, usage and the maintenance of equipment, machinery and apparatus used in hospitals, clinics and healthcare delivery facilities, clinical laboratories and similar institutions.



ACCOMMODATION

Note that block bookings have been made at the hotels listed opposite, but must be booked via the SBS online registration form. *Rates are per room per night. You will be invoiced for your accommodation by the hotel. Please pay them directly.*

SOCIAL FUNCTIONS

COCKTAIL PARTY

Date Wednesday, 17th October 2007
Time 17:10 – 19:30
Venue Selley Hall / Upper Floor Foyer Feather Market Centre
Please Note *The cost for this event is included in the price for those booking on the full 3 day event.*
Transport Buses will start taking delegates back to their hotels from 19:00

BEACH PARTY

Date Thursday, 18th October 2007
Time 18:30 – 22:30
Venue Happy Valley Beach
Please Note *The cost for this event is included in the price for those booking on the full 3 day event.*
Transport Buses will start taking delegates back to their hotels from 22:00

DAY 2

THURSDAY 18 OCTOBER 2007

08:00	Registration / Refreshments		
	Track 1 Planning & Design	Track 2 Operation	Track 3 Clinical Engineering
08:30	Running the Numbers: Hospital Design & Facility Planning <i>Marianus de Jager, Director/Architect, A3 Architects (Pty) Ltd</i>	Outsourcing as an option for delivery of maintenance services in a Provincial Health Department <i>Dr Johann McDuling, Director, Built Care (Pty) Ltd</i>	Diffusion of Technological Innovation in the South African Private Healthcare Market <i>Riaan van der Watt, Director, Rho-Consulting</i>
09:10	A Partnership Approach to Upgrading Healthcare Facilities <i>Miss Nolwazi Gasa, Health Specialist, Development Bank of SA</i>	A Corporate approach to Facility Management <i>Kevin Poggenpoel, Regional Engineer, Medi-Clinic</i>	A Framework for Integrated Healthcare with a focus on the African Region <i>Mladen Poluta, Director: Healthcare Technology Management Programme, UCT/Groote Schuur Hospital</i>
09:50	Refreshments / View Exhibition		
	Track 1 Planning & Design	Track 2 Operation	Track 3 Clinical Engineering
10:20	Why is it so difficult to design the right hospital? <i>Enrico Nunziata, President, HtC Mozambique</i>	Critical Power Applications <i>Jonathan Duncan, Technical Manager, APC-MGE</i>	Clinical Engineering in SA Hospitals: Finding the Optimum Maintenance Mix <i>James Herbert, Group Specialist: Clinical Engineering, Medi-Clinic</i>
11:00	Design Framework for Sustainable Rural Hospitals in South Africa <i>Thozamile Sydney Mafu, Deputy Director: Health Physical Facilities Planning, Eastern Cape Department of Health</i>	Clinical Health Centres: Electrical Designer's Viewpoint <i>Ian MacHutchon, Independent Engineer</i>	The Training of Clinical Engineering Practitioners, Satisfying the Private and Public Sectors <i>Johan van Roon, Part-time Consultant/Lecturer, UNISA Clinical Engineering Programme</i>
11:40	A Toolkit for Healthcare Facility Design Evaluation - Some Case Studies <i>Peta de Jager, Researcher, CSIR</i>	Lifts in the Hospital Environment <i>Bill Murphy, Owner/Managing Member, Proj-i-Tech cc/Specialised Building Services</i>	Using Software to reduce Medication Errors <i>Lindsay John Curran, General Manager & Johan van der Merwe, National Sales Manager, Cardinal Health</i>
12:20	Lunch / View Exhibition		
13:50	Panel Discussion 2: Health & Safety - Airborne Infection Control	Workshop 1: Emergency Electrical Reticulation	
15:10	Refreshments / View Exhibition		
15:40	Panel Discussion 3: On-site Generation of Oxygen	Workshop 1 (continued): Emergency Electrical Reticulation	
17:00	End of formal proceedings for Thursday		
18:30	Beach Party (Happy Valley Beach — to 22:30)		

Humewood Hotel

33 Beach Road
www.humewoodhotel.co.za
 R435 single (b&b)
 R540 sharing (b&b)

Kelway Hotel

Brookes Hill Drive
www.thekelway.co.za
 R660 single (b&b)
 R820 Lux single (b&b)
 R760 sharing (b&b)
 R920 Lux sharing (b&b)

City Lodge Port Elizabeth

Cnr Beach & Lodge Rds Summerstrand
www.citylodge.co.za
 R697 single (b&b)
 R929 sharing (b&b)

Garden Court Kings Beach

La Roche Drive, Humewood
www.southernsun.com
 R745 single (b&b)
 R949 sharing (b&b)

Summerstrand Hotel

Beach Rd, Port Elizabeth
www.hotsummer.co.za
 R595 single (b&b)
 R700 sharing (b&b)



AIRPORT TRANSFERS

Please supply us with relevant flight dates, flight numbers and flight times by Monday, 8th October in order for us to arrange your collection and departure.

The cost is R160 return.

This must be pre-booked via our online registration form.

CONFERENCE TRANSFERS

A shuttle will operate from the main hotels on Marine Drive to the venue and return each day. Times and routes will be given nearer the time.

The cost is R300 for the three days.

This must be pre-booked via our online registration form.

ACCOMPANYING PARTNERS TOURS

Optional Partner Tours

Tour 1	Addo Elephant Park		
Wednesday 17 th October	Full Day Tour	R750	
Tour 2	City & Township Tour		
Thursday 18 th October	Morning Tour	R400	
Tour 3	Kragga Kamma Park		
Friday 19 th October	Morning Tour	R450	

Full details on the conference website: www.sbs.co.za/safhe

DAY 3

FRIDAY 19 OCTOBER 2007

08:00	Registration / View Exhibition		
	Track 1 Planning & Design	Track 2 Operation	Track 3 Clinical Engineering
08:30	An Airborne Infection Research Facility aimed at the Tuberculosis Challenge, and the need for Evidence Based Infection Control <i>Dr Sidney Parsons, Research Group Leader, CSIR</i>	The influence of current and new legislation on the South African hospital environment - A Technical Perspective <i>Francois Bester, Environmental System Manager/SHEQ Technical Specialist, Medi-Clinic</i>	Qualification of Testing of Theatre Environments <i>Deryck Smith, Principle Specialist: Industrial Sector, SSI/DSCCE (Cleanroom div. of SSI)</i>
09:10	The challenges of protecting health care workers in South Africa from becoming infected with Tuberculosis <i>Karen Shean, Regional MDR-TB co-ordinator, Brooklyn Chest Hospital</i>	The Development and Implementation of an Immovable Asset Management and Preservation Programme for Public Healthcare Facilities: A Case Study <i>Dr Johann McDuling, Director, Built Care (Pty) Ltd & Ms Mamsi Mogadime, Senior Manager: Physical Facilities Planning & Co-ordination, Limpopo Department of Health & Social Development</i>	<i>Title & Speaker to be confirmed</i>
09:50	National Department of Health Strategies with respect to TB / Airborne Disease Transmission <i>Richard Hussey, Director: Health Facility Planning, National Department of Health & Dr Sidney Parsons, Research Group Leader, CSIR</i>	Construction Contractors and Healthcare Delivery in SA: Challenges and Interventions <i>Llewellyn van Wyk, Research Group Leader, CSIR</i>	ICU Bedhead Service Systems — Need identification and selection <i>Renée du Toit, Consultant Health Facility Planner, Health Facility Planning</i>
10:30	Tea		
11:20	Panel Discussion 4: Emerging Issues - Future Issues in HCF Provision - Public & Private		
12:20	Conference Closure		
12:30	Lunch		
13:30	Exhibition Closes		

Delegates attending the SAFHE & CEASA 2007 Full Conference will earn 2.5 CPD points.

EXHIBITION

The exhibition is sold out.

To view the exhibition layout, visit: www.sbs.co.za/safhe

Exhibition will be open from:

12:30 – 19:30 on Wednesday, 17th October

08:00 – 17:00 on Thursday, 18th October

08:30 – 13:30 on Friday, 19th October

Poster Display:

There is a poster display area available for architects, developers and engineering consultants to display successful healthcare facility projects.

Display panels will be provided by the organisers and are 1m wide and 2m high, with one spotlight. *The reduced fee of R1000 + VAT per panel is available until the 31 July, after which the fee is R1500 + VAT per panel.*

Contact Natalie at SBS Conferences for further details:

Tel (021) 914 2888

Email registrar@sbs.co.za

List of exhibitors

Afrox Medical Gases
Beijing Aerospace ChangFeng Co.
Brinkman Ndayi McAll cc
Brittan Healthcare Group (Pty) Ltd
Cardinal Health
Clinical & Medical Services
Dräger Medical SA (Pty) Ltd
Encore Medical
Floors International
Floorworx Africa (Pty) Ltd
Franke & Afos
Huntleigh Africa
Hutz Medical
Intaka Investments (Pty) Ltd
Johnson & Johnson Medical (Pty) Ltd
Medhold
Medical Innovations
Meditek Hemko (Pty) Ltd
Micro Nursecall Systems
Myriad Medical
Nightingale Associates
Oxyplus SA (Pty) Ltd
Philips Medical Systems
Pro-Active Medical Supplies cc
R & J Medical Supplies cc
Respiratory Care Africa (Pty) Ltd
SAFMED (Pty) Ltd
Siemens
Smith & Nephew
SSEM Mthembu Medical
Stryker South Africa (Pty) Ltd
Technilamp (Pty) Ltd
Tecmed Africa (Pty) Ltd
The Scientific Group
Tycohealthcare (Pty) Ltd
Welch Allyn
Wonder Flooring

SPONSORSHIP

Several opportunities are available to suppliers of relevant products and services to gain exposure to the influential delegates at the conference and social events.

Contact Peter or Natalie at SBS Conferences for further details:

Tel (021) 914 2888

Email registrar@sbs.co.za

SPEAKERS

Andrew Cunninghame

Bill Murphy

Bruce Brinkman

Deon van Onselen

Deryck Smith

Enrico Nunziata

Francois Bester

Frik Lange

Hendrik Radyn

Henning Lensch

Ian MacHutchon

James Herbert

Johan van der Merwe

Johan van Roon

Johann McDuling, Dr

Jonathan Duncan

Karen Shean

Kevin Poggenpoel

Lindsay John Curran

Llewellyn van Wyk

Magda Coetzer

Mamsi Mogadime

Marianus de Jager

Mladen Poluta

Nolwazi Gasa

Peta de Jager

Peter Fuhri

Renée du Toit

Riaan van der Watt

Richard Hussey

Sidney Parsons, Dr

Thozamile Sydney Mafu

ORGANISING COMMITTEE

Conference Co-Chairs

Robin O'Reilly

Paolo Boschetti

Programme Chair

Geoff Abbott

Committee

Kevin Poggenpoel

Peter Aspinall

Peter Schilder

Riaan van der Watt

Sidney Parsons

www.sbs.co.za/safhe

